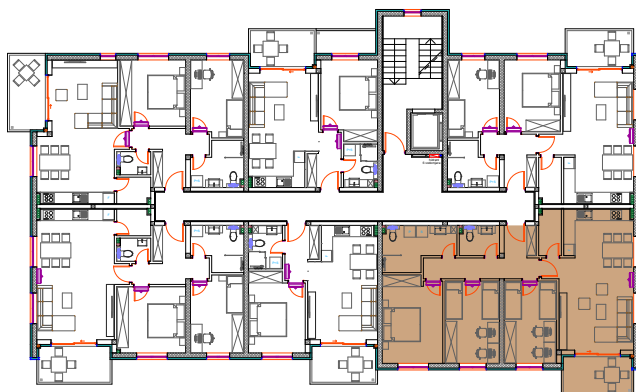
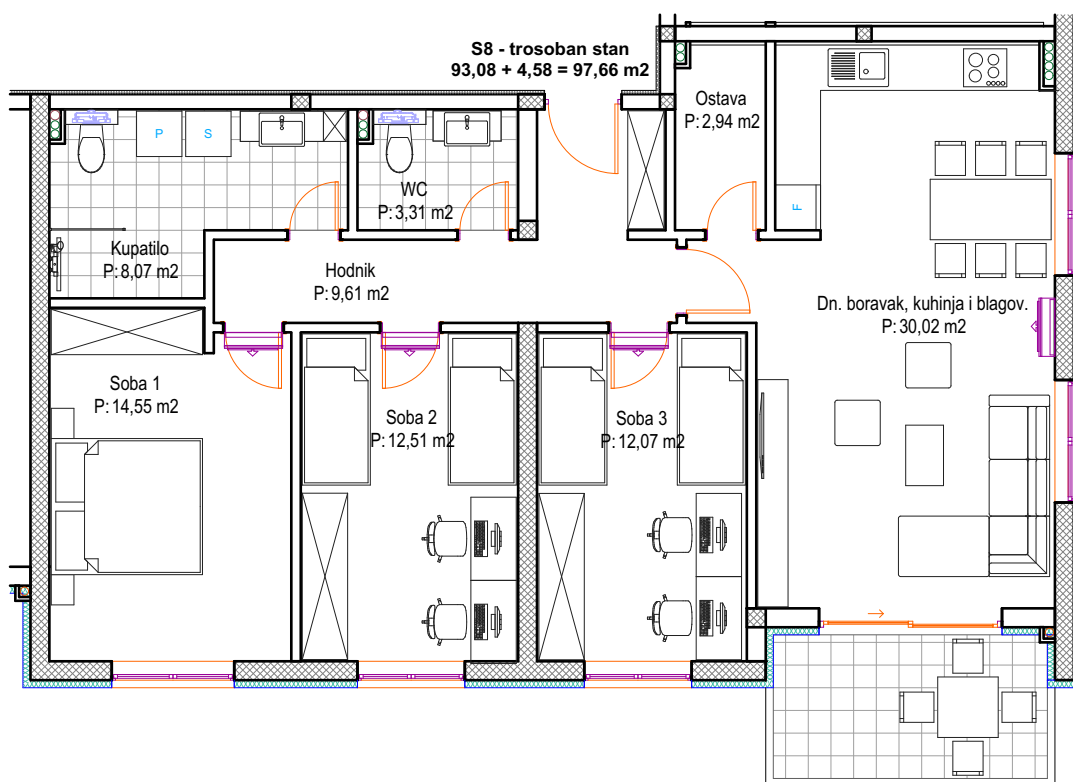


## POLOŽAJ STANA



UKUPNA NETO POVRŠINA:	97,66 m <sup>2</sup>
ETAŽA:	2. KAT
MJERILO:	1:100

**S8 - trosoban stan**

1. Hodnik	9,61 m <sup>2</sup>
2. Dnevni boravak, kuhinja i blagovaonica	30,02 m <sup>2</sup>
3. Ostava	2,94 m <sup>2</sup>
4. Soba 1	14,55 m <sup>2</sup>
5. Soba 2	12,51 m <sup>2</sup>
6. Soba 3	12,07 m <sup>2</sup>
7. Kupatilo	8,07 m <sup>2</sup>
8. WC	3,31 m <sup>2</sup>
Ukupno:	<b>93,08 m<sup>2</sup></b>
9. Balkon/lođa (4,97x0,50+2,78x0,75)	4,58 m <sup>2</sup>
Ukupno:	<b>97,66 m<sup>2</sup></b>