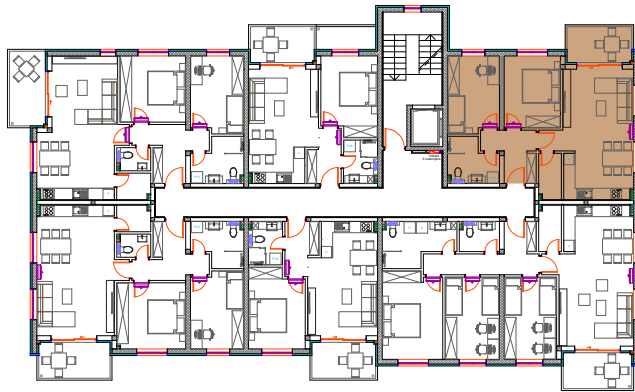


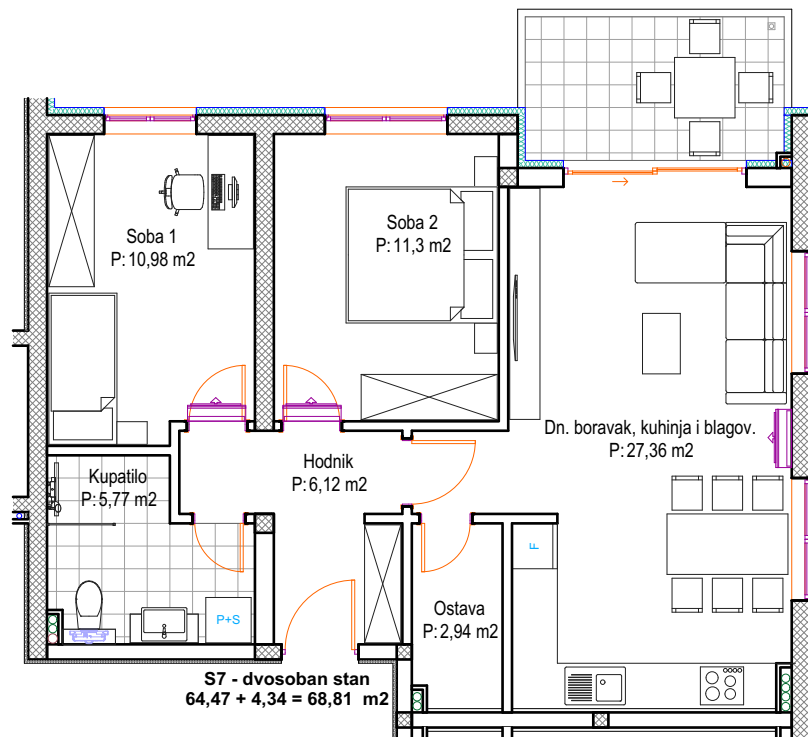
POLOŽAJ STANA



UKUPNA NETO POVRŠINA:	68,81 m <sup>2</sup>
ETAŽA:	2. KAT
MJERILO:	1:100



Balkon/lođa  
 P: 4,71x0,5=2,36 m<sup>2</sup>  
 P: 2,64x0,75=1,98 m<sup>2</sup>



**S7 - dvosoban stan**

1. Hodnik	6,12 m <sup>2</sup>
2. Dnevni boravak, kuhinja i blagovaonica	27,36 m <sup>2</sup>
3. Ostava	2,94 m <sup>2</sup>
4. Soba 1	10,98 m <sup>2</sup>
5. Soba 2	11,30 m <sup>2</sup>
6. Kupatilo	5,77 m <sup>2</sup>
Ukupno:	<b>64,47 m<sup>2</sup></b>
7. Balkon/lođa (4,71x0,50+2,64x0,75)	4,34 m <sup>2</sup>
Ukupno sa blkonom/lođom:	<b>68,81 m<sup>2</sup></b>