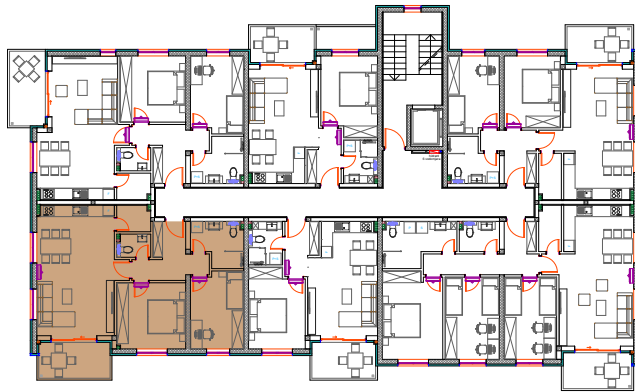
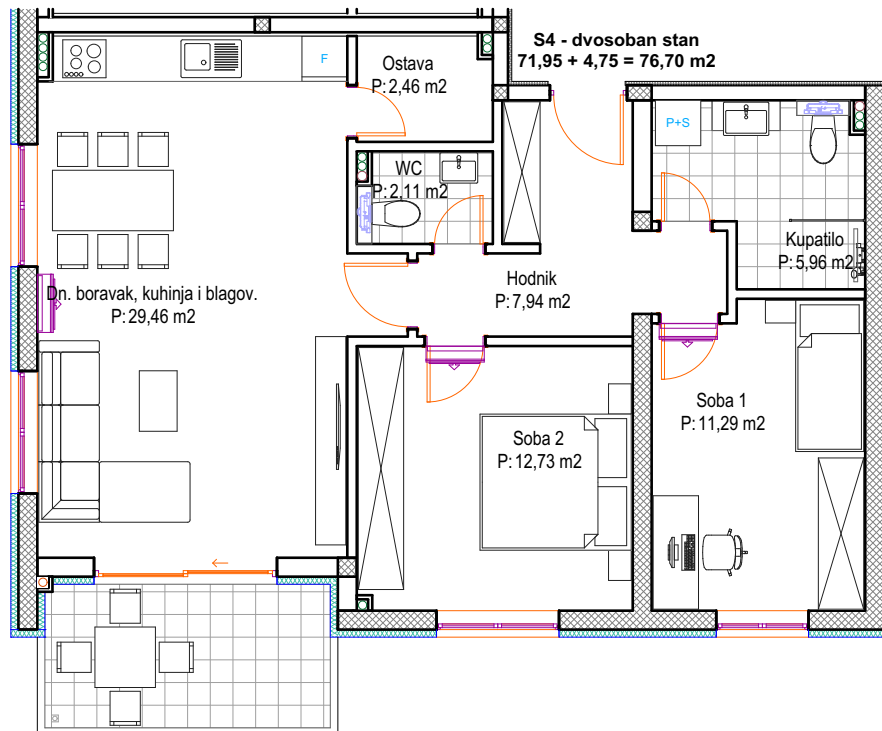


POLOŽAJ STANA



UKUPNA NETO POVRŠINA:	76,70 m <sup>2</sup>
ETAŽA:	1. KAT
MJERILO:	1:100



Balkon/lođa  
P: 5,17x0,5=2,59 m<sup>2</sup>  
P: 2,88x0,75=2,16 m<sup>2</sup>

**S4 - dvosoban stan**

1. Hodnik	7,94	m <sup>2</sup>
2. Dnevni boravak, kuhinja i blagovaonica	29,46	m <sup>2</sup>
3. Ostava	2,46	m <sup>2</sup>
4. Soba 1	11,29	m <sup>2</sup>
5. Soba 2	12,73	m <sup>2</sup>
6. Kupatilo	5,96	m <sup>2</sup>
7. WC	2,11	m <sup>2</sup>
Ukupno:		<b>71,95</b> m <sup>2</sup>
8. Balkon/lođa (5,17x0,50+2,88x0,75)	4,75	m <sup>2</sup>
Ukupno:		<b>76,70</b> m <sup>2</sup>