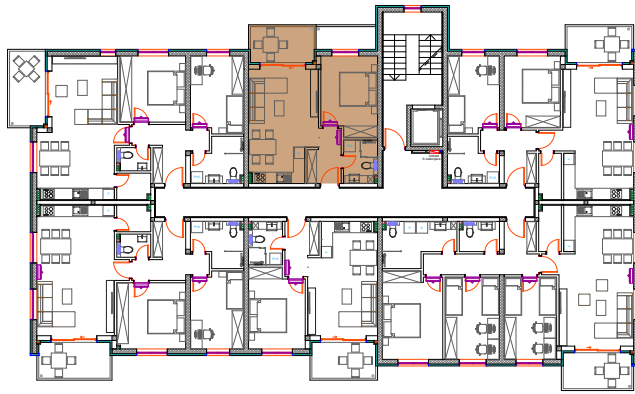


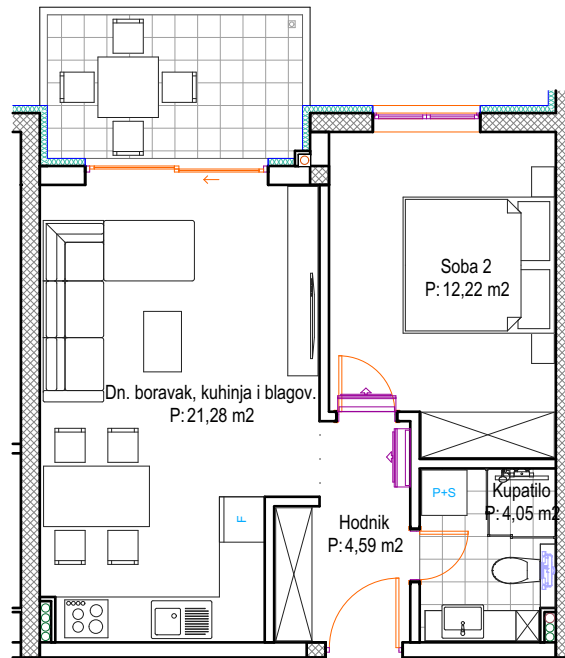
POLOŽAJ STANA



UKUPNA NETO POVRŠINA:	46,42 m <sup>2</sup>
ETAŽA:	3. KAT
MJERILO:	1:100



P: 4,65x0,5=2,33 m<sup>2</sup>  
 P: 2,60x0,75=1,95 m<sup>2</sup>



**S18 - jednosoban stan**  
 42,14 + 4,28 = 46,42 m<sup>2</sup>

**S18 - jednosoban stan**

1. Hodnik	4,59 m <sup>2</sup>
2. Dnevni boravak, kuhinja i blagovaonica	21,28 m <sup>2</sup>
3. Soba 1	12,22 m <sup>2</sup>
4. Kupatilo	4,05 m <sup>2</sup>
Ukupno:	<b>42,14 m<sup>2</sup></b>
5. Balkon/lođa (4,65x0,50+2,60x0,75)	4,28 m <sup>2</sup>
Ukupno:	<b>46,42 m<sup>2</sup></b>