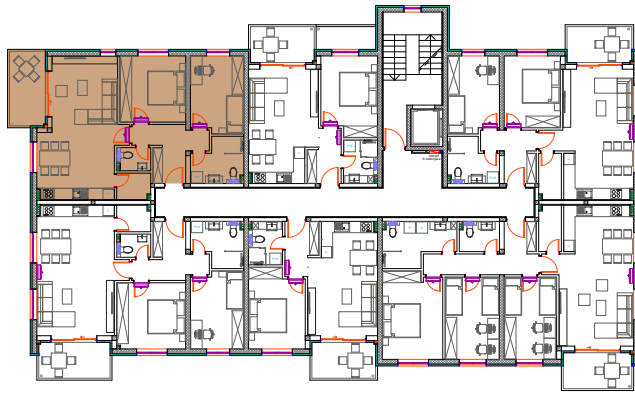


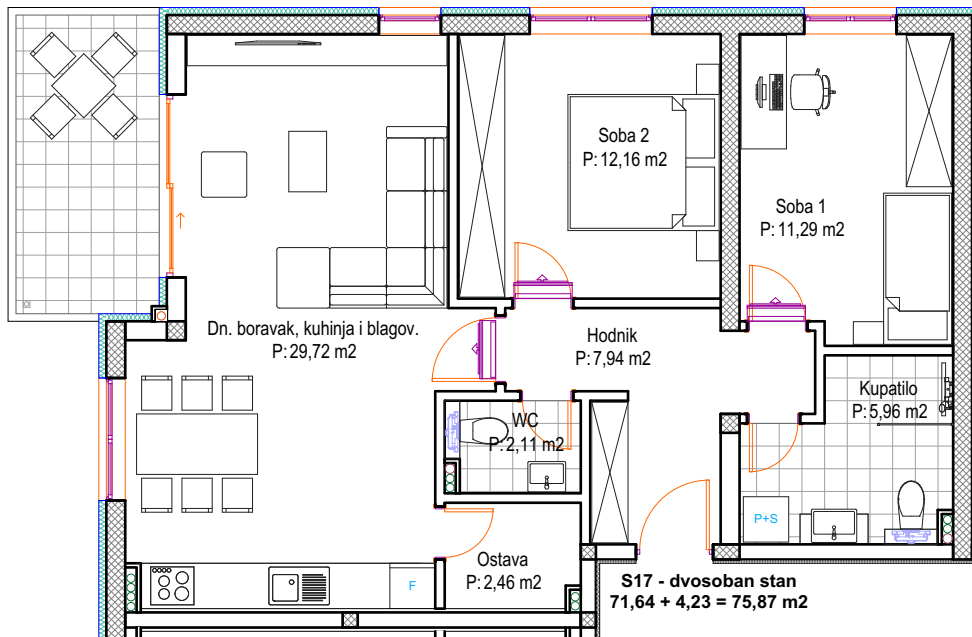
POLOŽAJ STANA



UKUPNA NETO POVRŠINA:	75,87 m <sup>2</sup>
ETAŽA:	3. KAT
MJERILO:	1:100



P: 8,46x0,5=4,23 m<sup>2</sup>



**S17 - dvosoban stan**

1. Hodnik	7,94 m <sup>2</sup>
2. Dnevni boravak, kuhinja i blagovaonica	29,72 m <sup>2</sup>
3. Ostava	2,46 m <sup>2</sup>
4. Soba 1	11,29 m <sup>2</sup>
5. Soba 2	12,16 m <sup>2</sup>
6. Kupatilo	5,96 m <sup>2</sup>
7. WC	2,11 m <sup>2</sup>
Ukupno:	<b>71,64 m<sup>2</sup></b>
8. Balkon (8,46x0,50)	4,23 m <sup>2</sup>
Ukupno:	<b>75,87 m<sup>2</sup></b>