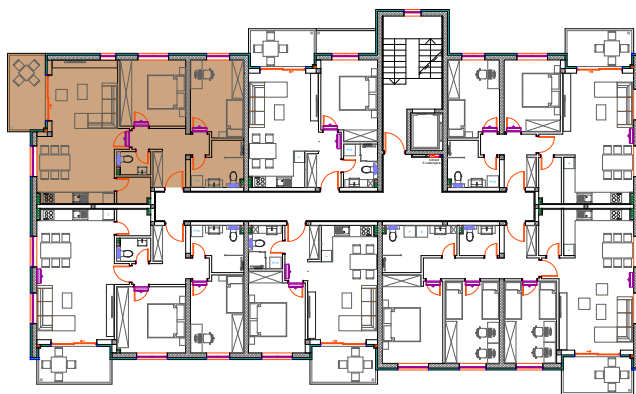


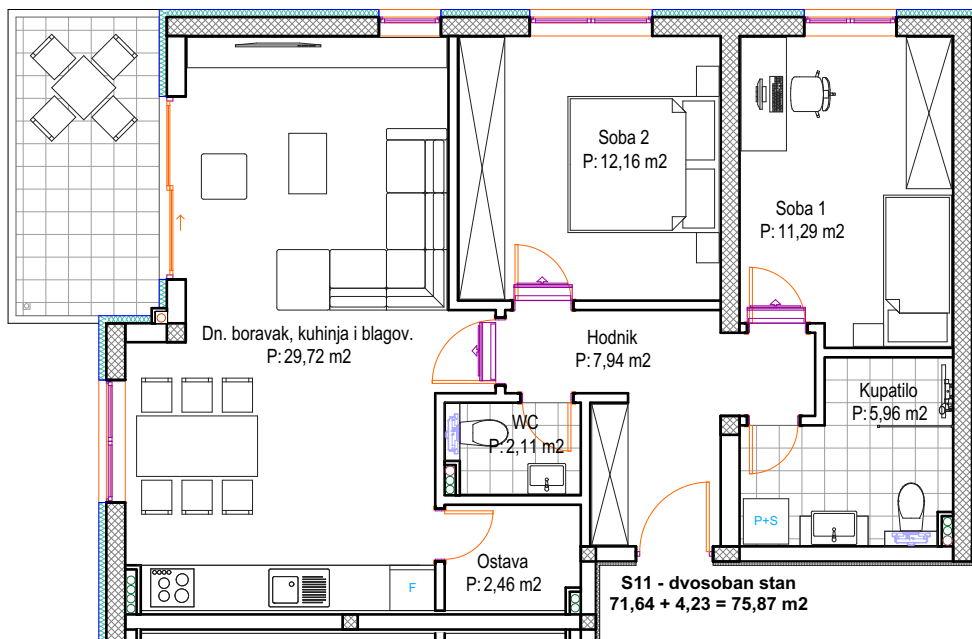
POLOŽAJ STANA



| | |
|-----------------------|----------------------|
| UKUPNA NETO POVRŠINA: | 75,87 m ² |
| ETAŽA: | 2. KAT |
| MJERILO: | 1:100 |



P: 8,46x0,5=4,23 m²



S11 - dvosoban stan

| | |
|---|----------------------------|
| 1. Hodnik | 7,94 m ² |
| 2. Dnevni boravak, kuhinja i blagovaonica | 29,72 m ² |
| 3. Ostava | 2,46 m ² |
| 4. Soba 1 | 11,29 m ² |
| 5. Soba 2 | 12,16 m ² |
| 6. Kupatilo | 5,96 m ² |
| 7. WC | 2,11 m ² |
| Ukupno: | 71,64 m² |
| 8. Balkon (8,46x0,50) | 4,23 m ² |
| Ukupno: | 75,87 m² |