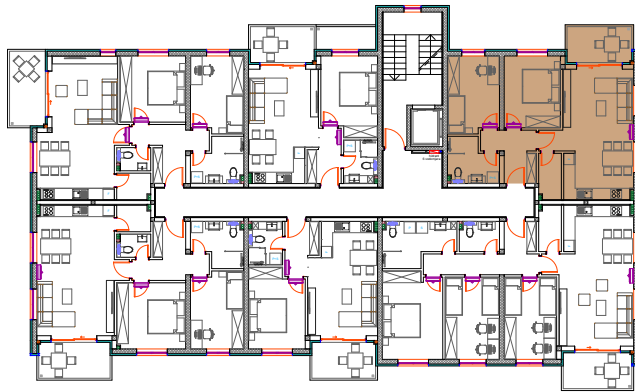


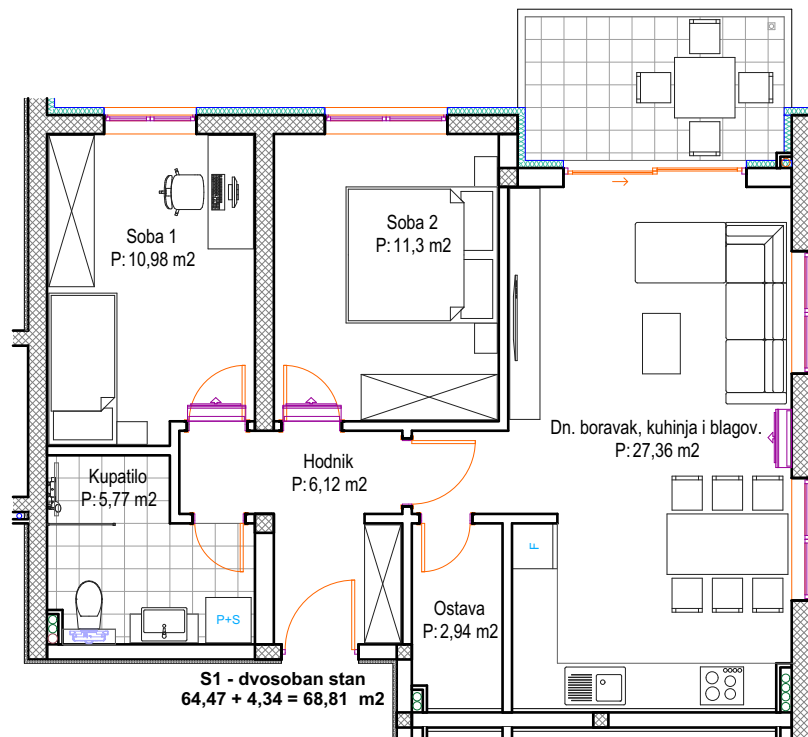
POLOŽAJ STANA



| | |
|-----------------------|----------------------|
| UKUPNA NETO POVRŠINA: | 68,81 m ² |
| ETAŽA: | 1. KAT |
| MJERILO: | 1:100 |



Balkon/lođa
 P: 4,71x0,5=2,36 m²
 P: 2,64x0,75=1,98 m²



S1 - dvosoban stan

| | |
|---|----------------------------|
| 1. Hodnik | 6,12 m ² |
| 2. Dnevni boravak, kuhinja i blagovaonica | 27,36 m ² |
| 3. Ostava | 2,94 m ² |
| 4. Soba 1 | 10,98 m ² |
| 5. Soba 2 | 11,30 m ² |
| 6. Kupatilo | 5,77 m ² |
| Ukupno: | 64,47 m² |
| 7. Balkon/lođa (4,71x0,50+2,64x0,75) | 4,34 m ² |
| Ukupno sa blkonom/lođom: | 68,81 m² |